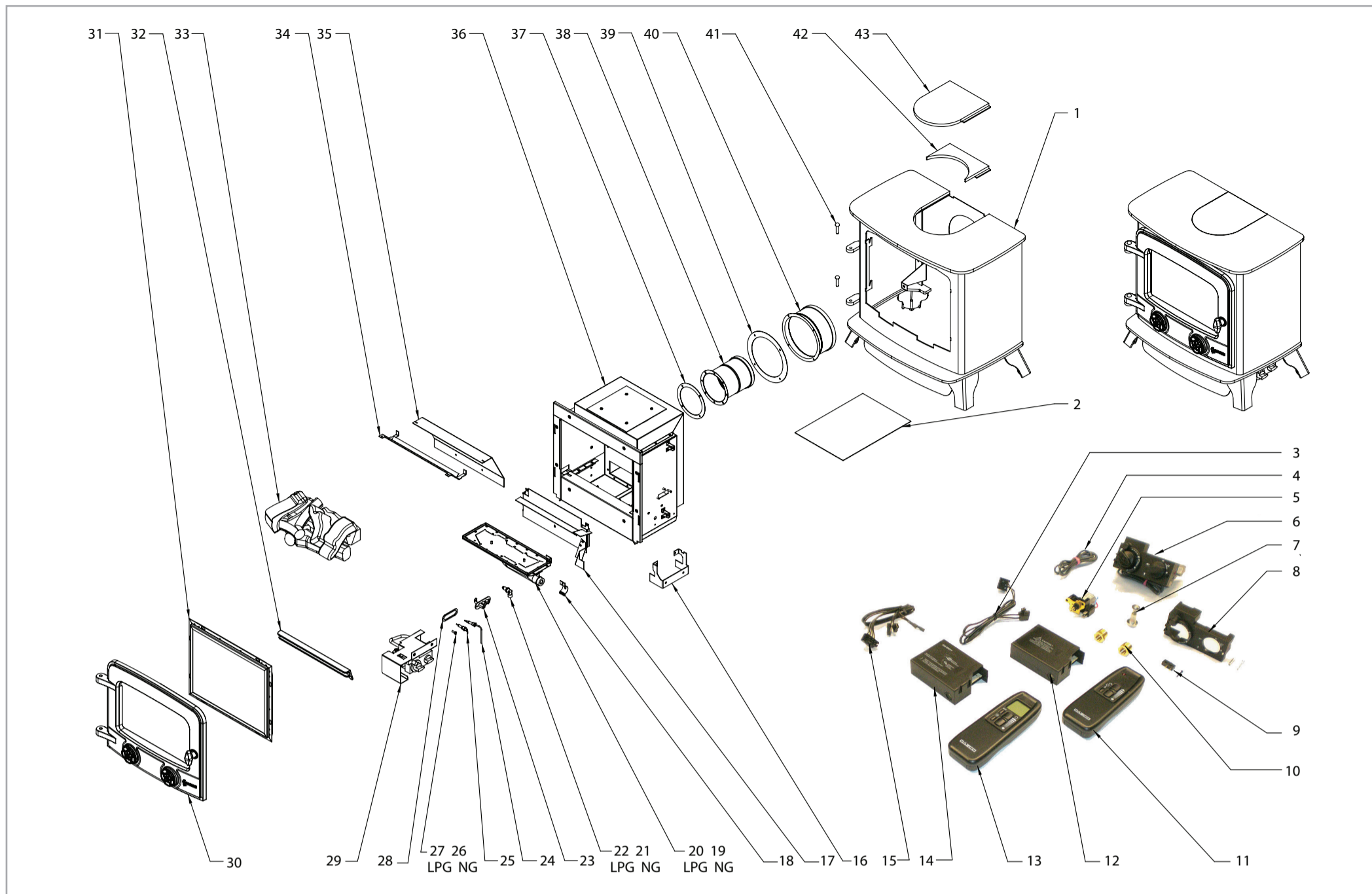


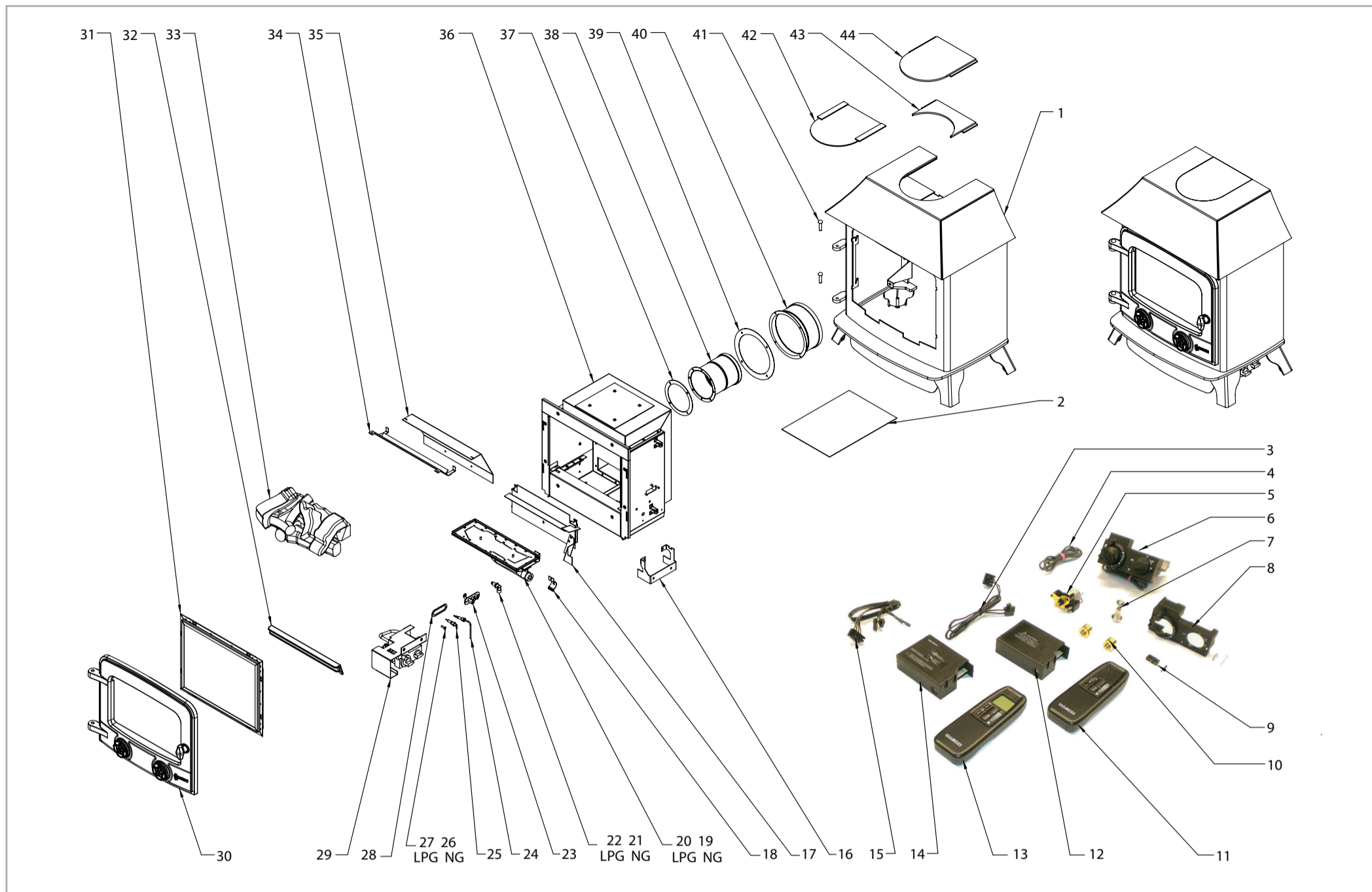
YM-(P)N9181FL YEOMAN EXE FLAT TOP BALANCED FLUE - NG & LPG



Ref. No.	Product Code	Description	Quantity
1	GZ8787	BF FLAT TOP CARCASS ASSEMBLY	1
2	GZ9006	EXE MIDI B/F - INSTRUCTION KIT	1
3	EL0237	STANDARD RECV CABLE G30-ZRCS/350	1
4	GC0090	IGNITION LEAD G30-EZS9005	1
5	EL0234	GEARED MOTOR G30-EMS	1
6	GC0088K	MERTIK VALVE CONTROL	1
7	GC0092	MAG UNIT G30-EP290/110	1
8	GC0087	MERTIK CONTROL COVER G30-ZHN2	1
9	EL0241	MICRO SWITCH & SCREW G30-ZMS	1
10	FA0294	3/8" BSP ADADPTORS	2
11	EL0239	STD BLK HANDSET G30-ZRHSO-Z26	1
12	EL0235	STANDARD RECEIVER G30-ZRRS	1
13	EL0240	THERMOSTATIC H/SET G30-ZRHTT-Z27	1
14	EL0236	THERMOSTAT RECEIVER G30-ZRRT	1
15	EL0238	THERMO RECV CABLE G30-ZRCT/350	1
16	GZ6075	CONTROL BRACKET SUPPORT	1
17	GZ5723	INLET AIRBAFFLE ASSEMBLY	1
18	GZ3869	AERATION ADJUSTER	1
19	GZ5501	BURNER ASSEMBLY - NG	1
20	GZ5510	BURNER ASSEMBLY - LPG	1
21	IN0060	ELBOW INJECTOR - NG	1
22	IN0054	INJECTOR 110 - LPG	1
23	PI0051	PILOT BURNER BODY	1
24	PI0011	THERMOCOUPLE	1
25	PI0053	PILOT ELECTRODE 90 DEGREE	1

Ref. No.	Product Code	Description	Quantity
26	PI0026	INJECTOR 27 - HOOK JET - NG	1
27	PI0015	INJECTOR 19 - HOOK JET - LPG	1
28	PI0052	PILOT GASKET	1
29	B0216	BURNER CONTROL ASSEMBLY	1
30	CA0719	SINGLE DOOR ASSEMBLY	1
31	GZ6225	GLASS FRAME & GLASS ASSEMBLY	1
32	CA0613	CAST FUEL RETAINER BARS	1
33	CE0565	LOG SET	1
34	GZ4966	TOP INNER BAFFLE	1
35	GZ4967	REAR INNER BAFFLE	1
36	GZ4963	BALANCED FLUE FIREBOX	1
37	CE0210	BF INNER FLUE GASKET	1
38	MEC0231	BF INNER SPIGOT	1
39	CE0211	BF OUTER FLUE GASKET	1
40	MEC0232	BF OUTER SPIGOT	1
41	YF00106	HINGE PIN	1
42	GZ8612	PARTIAL INFILL ASSEMBLY - BF	1
43	GZ8613	INFILL ASSEMBLY - BF	1

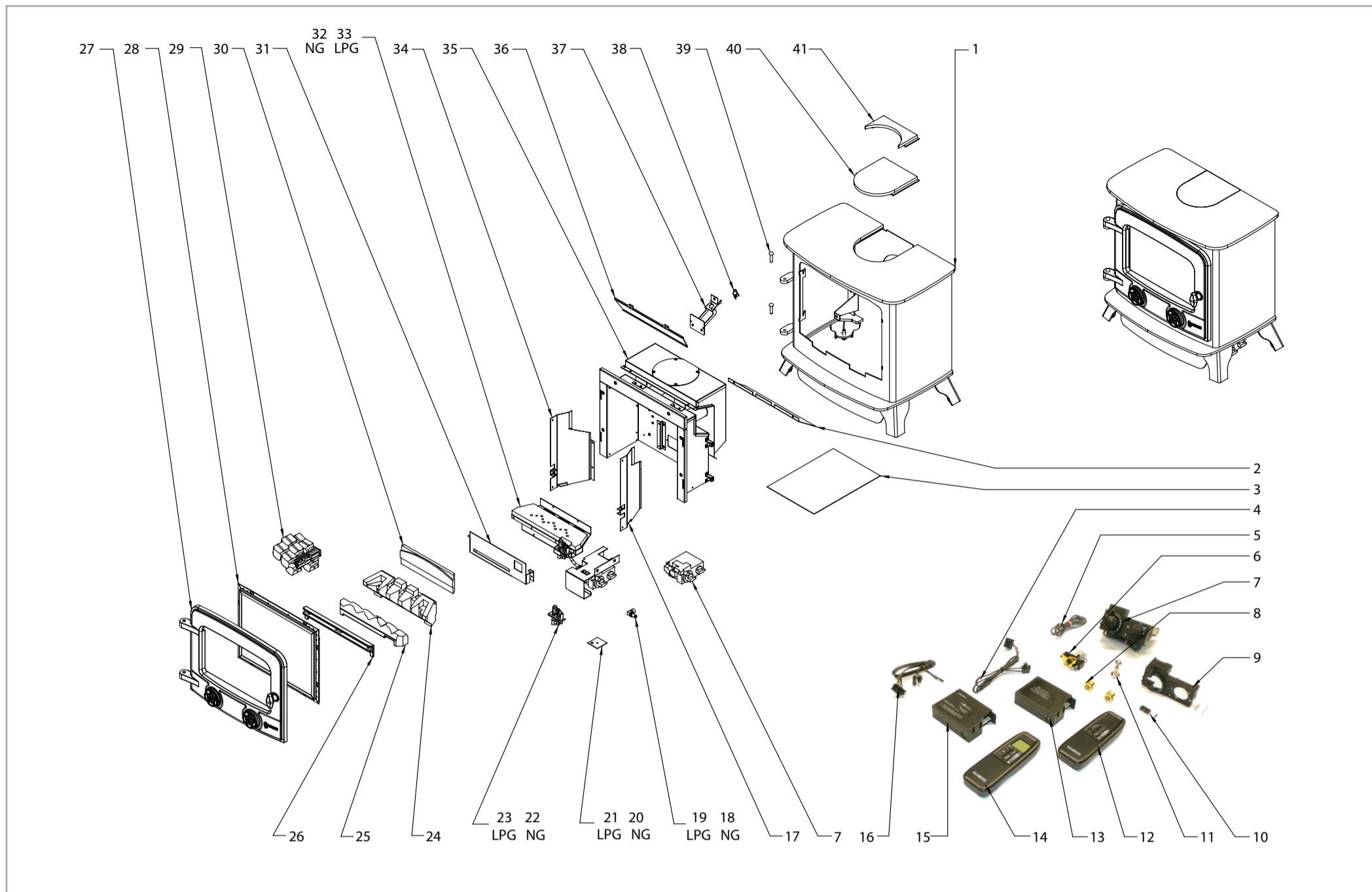
YM-(P)N9181LC YEOMAN EXE LOW CANOPY BALANCED FLUE - NG & LPG



Ref. No.	Product Code	Description	Quantity
1	GZ8774	BF LOW CANOPY - CARCASS ASSEMBLY	1
2	GZ9006	EXE MIDI B/F - INSTRUCTION KIT	1
3	EL0237	STANDARD RECV CABLE G30-ZRCS/350	1
4	GC0090	IGNITION LEAD G30-EZS9005	1
5	EL0234	GEARED MOTOR G30-EMS	1
6	GC0088K	MERTIK VALVE CONTROL	1
7	GC0092	MAG UNIT G30-EP290/110	1
8	GC0087	MERTIK CONTROL COVER G30-ZHN2	1
9	EL0241	MICRO SWITCH & SCREW G30-ZMS	1
10	FA0294	3/8" BSP ADADPTORS	2
11	EL0239	STD BLK HANDSET G30-ZRHSO-Z26	1
12	EL0235	STANDARD RECEIVER G30-ZRRS	1
13	EL0240	THERMOSTATIC H/SET G30-ZRHTT-Z27	1
14	EL0236	THERMOSTAT RECEIVER G30-ZRRT	1
15	EL0238	THERMO RECV CABLE G30-ZRCT/350	1
16	GZ6075	CONTROL BRACKET SUPPORT	1
17	GZ5723	INLET AIRBAFFLE ASSEMBLY	1
18	GZ3869	AERATION ADJUSTER	1
19	GZ5501	BURNER ASSEMBLY - NG	1
20	GZ5510	BURNER ASSEMBLY - LPG	1
21	IN0060	ELBOW INJECTOR - NG	1
22	IN0054	INJECTOR 110 - LPG	1
23	PI0051	PILOT BURNER BODY	1
24	PI0011	THERMOCOUPLE	1
25	PI0053	PILOT ELECTRODE 90 DEGREE	1

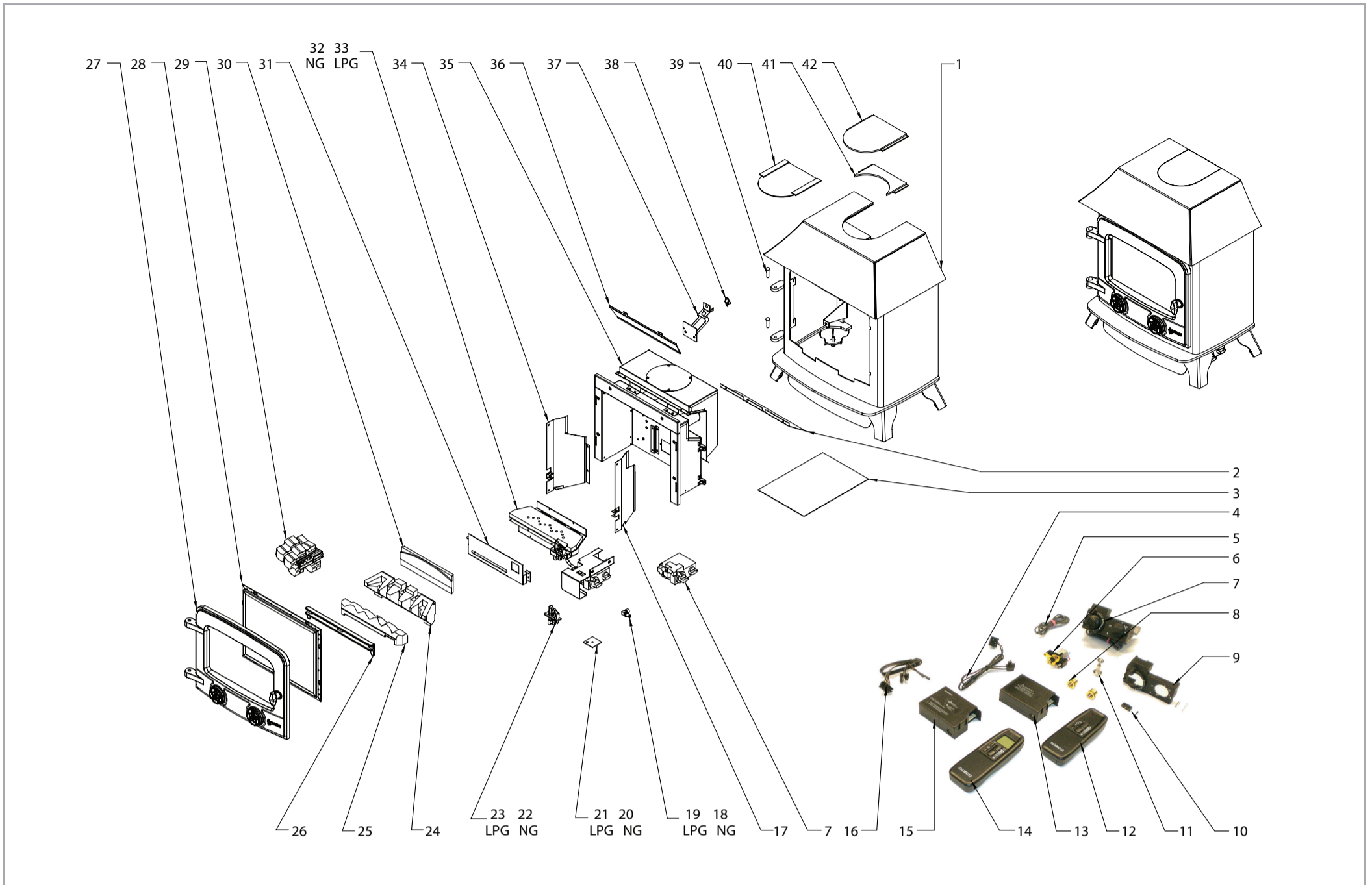
Ref. No.	Product Code	Description	Quantity
26	PI0026	INJECTOR 27 - HOOK JET - NG	1
27	PI0015	INJECTOR 19 - HOOK JET - LPG	1
28	PI0052	PILOT GASKET	1
29	B0216	BURNER CONTROL ASSEMBMLY	1
30	CA0719	SINGLE DOOR ASSEMBLY	1
31	GZ6225	GLASS FRAME & GLASS ASSEMBLY	1
32	CA0613	CAST FUEL RETAINER BARS	1
33	CE0565	LOG SET	1
34	GZ4966	TOP INNER BAFFLE	1
35	GZ4967	REAR INNER BAFFLE	1
36	GZ4963	BALANCED FLUE FIREBOX	1
37	CE0210	BF INNER FLUE GASKET	1
38	MEC0231	BF INNER SPIGOT	1
39	CE0211	BF OUTER FLUE GASKET	1
40	MEC0232	BF OUTER SPIGOT	1
41	YF00106	HINGE PIN	1
42	GZ8992	INFILL ASSEMBLY BASE PLATE - BF	1
43	GZ8771	LOW CANOPY - PARTIAL INFILL ASSY	1
44	GZ8767	LOW CANOPY - INFILL ASSEMBLY - BF	1

YM-(P)N9171FL YEOMAN EXE FLAT TOP CONVENTIONAL FLUE - NG & LPG



Ref. No.	Product Code	Description	Quantity
1	GZ8734	EXE MIDI C/F - FLAT TOP CARCASS ASSY	1
2	GZ1074	F'BOX LOWER REAR AIRGUIDE	1
3	GZ9007	EXE MIDI C/F - INSTRUCTION KIT	1
4	EL0237	STANDARD REC'V CABLE G30-ZRCS/350	1
5	GC0090	IGNITION LEAD G30-EZS9005	1
6	EL0234	GEARED MOTOR G30-EMS	1
7	GC0088K	MERTIK VALVE CONTROL	1
8	FA0294	3/8" BSP ADAPATORS	2
9	GC0087	MERTIK CONTROL COVER G30-ZHN2	1
10	EL0241	MICRO SWITCH & SCREW G30-ZMS	1
11	GC0092	MAG UNIT G30-EP290/110	1
12	EL0239	STD BLK HANDSET G30-ZRHSO-Z26	1
13	EL0235	STANDARD RECEIVER G30-ZRRS	1
14	EL0240	THERMOSTATIC H/SET G30-ZRHTT-Z27	1
15	EL0236	THERMOSTAT RECEIVER G30-ZRRT	1
16	EL0238	THERMO REC'V CABLE G30-ZRCT/350	1
17	GZ4949	RHS REFLECTOR TRAY SUPPORT	1
18	IN0001	260 ELBOW INJECTOR	1
19	IN0054	INJECTOR 110	1
20	ME4066	AERATION PLATE	1
21	ME4954	AERATION PLATE 1x13.5MM HOLE	1
22	PI0036	NG OXYPILOT	1
23	PI0037	LPG OXYPILOT	1
24	CE0118	FLAME BAFFLE CERAMIC	1
25	CE0122	CLASS 2 FRONT COAL CERAMIC	1

Ref. No.	Product Code	Description	Quantity
26	CA0613	CAST FUEL RETAINER BARS	1
27	CA0719	EXE MIDI SINGLE DOOR ASSEMBLY	1
28	GZ6025	GLASS FRAME & GLASS ASSEMBLY	1
29	CE0127	COAL SET FOR CLASS 2 FIRES	1
30	CE0135	SMALL STOVE BACK PANEL	1
31	GZ0993	SECONDARY AERATION BAFFLE	1
32	B0214	MIDI 'B' VENT ENGINE ASSEMBLY - NG	1
33	PB0214	MIDI 'B' VENT ENGINE ASSEMBLY - LPG	1
34	GZ4948	LHS REFLECTOR TRAY SUPPORT	1
35	GZ6385	FIREBOX ASSEMBLY	1
36	GZ4854	INNER BOX TOP BAFFLE	1
37	GZ4855	TTB STRAP/ACCESS DOOR ASSEMBLY	1
38	EL0001	FLUE SENSOR	1
39	YF00106	HINGE PIN	1
40	GZ8607	INFILL ASSEMBLY	1
41	GZ8606	PARTIAL INFILL ASSEMBLY	1



Ref. No.	Product Code	Description	Quantity
1	GZ8773	EXE MIDI C/F - LC CARCASS ASSY	1
2	GZ1074	F'BOX LOWER REAR AIRGUIDE	1
3	GZ9007	EXE MIDI C/F - INSTRUCTION KIT	1
4	EL0237	STANDARD REC'V CABLE G30-ZRCS/350	1
5	GC0090	IGNITION LEAD G30-EZS9005	1
6	EL0234	GEARED MOTOR G30-EMS	1
7	GC0088K	MERTIK VALVE CONTROL	1
8	FA0294	3/8" BSP ADAPATORS	2
9	GC0087	MERTIK CONTROL COVER G30-ZHN2	1
10	EL0241	MICRO SWITCH & SCREW G30-ZMS	1
11	GC0092	MAG UNIT G30-EP290/110	1
12	EL0239	STD BLK HANDSET G30-ZRHSO-Z26	1
13	EL0235	STANDARD RECEIVER G30-ZRRS	1
14	EL0240	THERMOSTATIC H/SET G30-ZRHTT-Z27	1
15	EL0236	THERMOSTAT RECEIVER G30-ZRRT	1
16	EL0238	THERMO REC'V CABLE G30-ZRCT/350	1
17	GZ4949	RHS REFLECTOR TRAY SUPPORT	1
18	IN0001	260 ELBOW INJECTOR	1
19	IN0054	INJECTOR 110	1
20	ME4066	AERATION PLATE	1
21	ME4954	AERATION PLATE 1x13.5MM HOLE	1
22	PI0036	NG OXYPILOT	1
23	PI0037	LPG OXYPILOT	1
24	CE0118	FLAME BAFFLE CERAMIC	1
25	CE0122	CLASS 2 FRONT COAL CERAMIC	1

Ref. No.	Product Code	Description	Quantity
26	CA0613	CAST FUEL RETAINER BARS	1
27	CA0719	EXE MIDI SINGLE DOOR ASSEMBLY	1
28	GZ6025	GLASS FRAME & GLASS ASSEMBLY	1
29	CE0127	COAL SET FOR CLASS 2 FIRES	1
30	CE0135	SMALL STOVE BACK PANEL	1
31	GZ0993	SECONDARY AERATION BAFFLE	1
32	B0214	MIDI 'B' VENT ENGINE ASSEMBLY - NG	1
33	PB0214	MIDI 'B' VENT ENGINE ASSEMBLY - LPG	1
34	GZ4948	LHS REFLECTOR TRAY SUPPORT	1
35	GZ6385	FIREBOX ASSEMBLY	1
36	GZ4854	INNER BOX TOP BAFFLE	1
37	GZ4855	TTB STRAP/ACCESS DOOR ASSEMBLY	1
38	EL0001	FLUE SENSOR	1
39	YF00106	HINGE PIN	1
40	GZ8990	INFILL ASSEMBLY BASE PLATE	1
41	GZ8769	PARTIAL INFILL ASSEMBLY	1
42	GZ8765	INFILL ASSEMBLY	1